

# ASTAXANTHIN RADIANCE “6-IN-1” ANTI-AGING SERUM

**“8%+ Natural Astaxanthin, Six-Defense & Two-Boost Skincare Solution.”**

## **(Benefit Highlights):**

- ① “No added water” – the water listed in the ingredients comes naturally from patented complexes PhytoRelief and PhytoComfort.
- ② Top three ingredients are yeast filtrate and Haematococcus Pluvialis, making up 84% of the formula. With over 90% active skin-nourishing ingredients, this high-concentration essence delivers multiplied antioxidant power.
- ③ Zero artificial colorants – the orange hue comes naturally from the high content of astaxanthin.
- ④ Innovative Six-Defense & Two-Boost early anti-aging solution: Six Defense: antioxidant, anti-glycation, anti-wrinkle, anti-dryness, anti-thermal damage, anti-sensitivity.



**MOKSHA**



# GUAVA MULTI-LAYER CLARIFYING CLEANSING BALM



**Enzyme-Based Exfoliating Makeup Remover  
— Smooth, Bright, and Skin-Nourishing.”**



## **(Benefit Highlights):**

- ①Water-Activated Emulsion, Zero Residue – Bi-phase oil & water formula, no second cleanse needed.
- ②Powerful Makeup Removal in 10 Seconds – Oil dissolves oil, effectively clearing pores for deeply clean skin.
- ③Innovative Hard-Water Resistant Formula – Helps improve sensitive and acne-prone skin from the source.
- ④Cleanse + Care + Nourish in One – Removes makeup while repairing and strengthening the skin barrier.



# ROSE CELL LUXURIOUS ALL-IN-ONE CREAM

**Decathlon for Skin — Systematically  
Improves All Signs of Aging**

## **(Benefit Highlights):**

- ①“Melt-on-Skin” Texture – A honey-cream that transforms into an oil-like touch upon contact, silky, fast-absorbing, and deeply nourishing.
- Plant-Derived Exosomes – Target multiple types of cellular aging to reverse visible skin age.
- ②First-to-Use Bifida Ferment Lysate – Stimulates Type I collagen production for intensive anti-aging benefits.
- ③24-Hour Tailored Routine – Use as a thin layer under makeup, day-and-night care, or as a spa-like thick mask.
- ④Natural Rose Aroma – Zero synthetic fragrance, with the pure floral scent from rose oil itself.

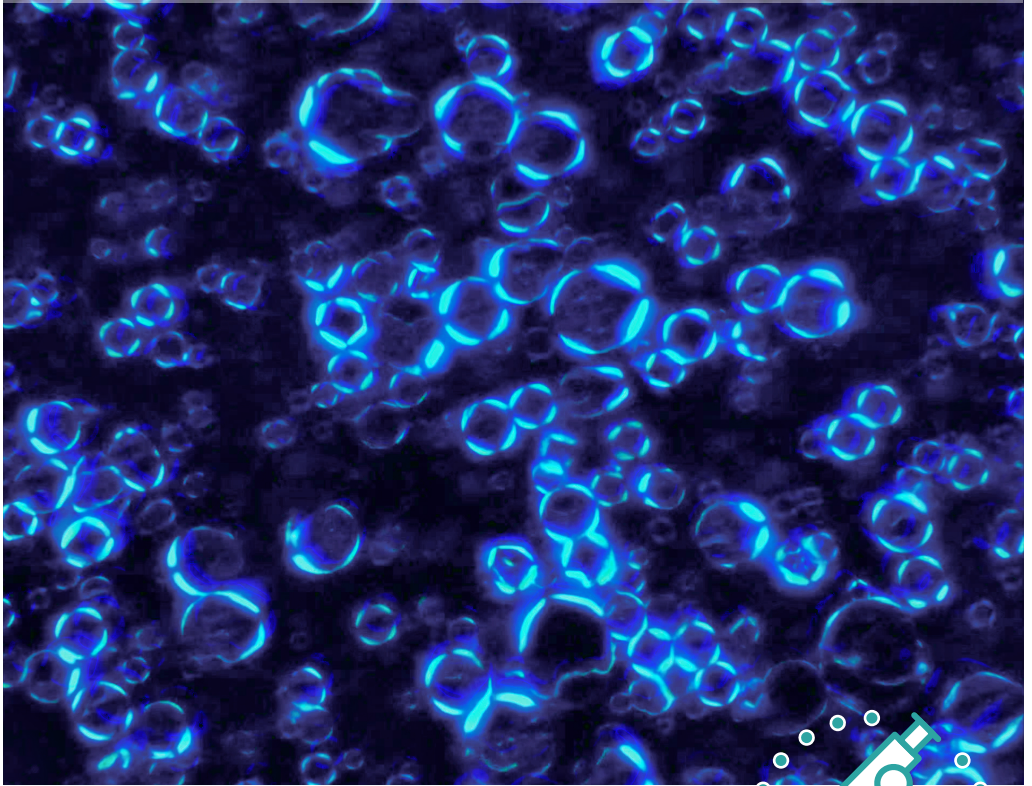


**MOKSHA**





# MULTI-PEPTIDE AGE-FREEZE LIQUID CRYSTAL CREAM



**Wrinkle-Messenger Peptide — Sculpting-Level  
Repair for Wrinkles, Sagging, and Hollowness**



## **(Benefit Highlights):**

- ①Enhanced Liquid Crystal System – Forms a stable protective layer at the oil-water interface, boosting cream stability.
- ②Layered Liquid Crystals for Long-Lasting Hydration – Multi-lamellar water-oil structures continuously attract and retain moisture for deep, lasting replenishment.
- ③Multi-Layered Slow Release of Actives – Reduces transmission speed of actives across interfaces, extending their efficacy.
- ④Superior Skin Feel – Initial nourishing comfort, breaking into a refreshing cool touch upon application, leaving skin smooth and non-greasy.





# WHITE MOONLIGHT LUXURIOUS BRIGHTENING SERUM



**Biophotonic Technology — Advanced Path to  
Radiant, Youthful, Translucent Skin**



## **(Benefit Highlights):**

- ①88%+ Highly Active Formula – Multi-dimensional improvement of visible aging signs, restoring youthful luminosity from within.
- ②3+3 Brightening Synergy – A fusion of science and nature to target pigmentation issues across multiple skin layers.
- ③Multi-Pathway Coverage – Comprehensive intervention from melanin formation and transport to metabolism.
- ④Dual Anti-Oxidation & Anti-Glycation – Fights dullness caused by UV exposure, late nights, and glycation for a three-dimensional brightening effect.
- ⑤Gentle with Low Irritation Risk – Free from harsh ingredients, enriched with high levels of aloe vera and birch sap to further minimize sensitivity

**MOKSHA**



# BARRIER-REPAIR SOOTHING MICRO-BEAD CREAM



**Proprietary Microcapsule Fresh-Lock Technology  
— Releases on Contact, Doubled Repair Power**



## **(Benefit Highlights):**

- ① Iconic Microcapsule Fresh-Lock System – Inspired by luxury benchmarks, active-loaded capsules are infused into a unique hydro-cream texture for both beauty and freshness.
- ② Absorbed in 5 Seconds, Hydrating Yet Non-Greasy – Melts into silky moisture on contact, leaving skin breathable, fresh, and suitable for multiple skin types.
- ③ Intensive Repair Formula, Essence-Grade Care – Featuring Bifida Ferment Lysate as the hero ingredient, visibly nourishing the skin.
- ④ Powerful Antioxidant Action Against Early Aging – Targets superficial and mid-dermal signs of aging, reducing dryness, fine lines, roughness, and sensitivity.



# AGE-REVERSE WRINKLE-REDUCING SERUM



**Full-Pathway Anti-Wrinkle Matrix — Achieving  
24-Hour Closed-Loop Anti-Aging**

## **(Benefit Highlights):**

- ①Daytime Defense – Fermented actives activate SIRT longevity proteins, enhancing cellular stress resistance.
- ②Nighttime Repair – Collagen peptides and retinol derivatives work in synergy to remodel dermal structure.
- ③Advanced Fermentation Technology – Triple-ferment complex with an inclusion level of up to 70%.
- ④Comprehensive Anti-Wrinkle Matrix – Collagen activation, dynamic wrinkle inhibition, and anti-oxidation + anti-glycation protection.





# RECOMBINANT HUMANIZED TYPE III COLLAGEN AGE-DEFYING REGENERATING CREAM



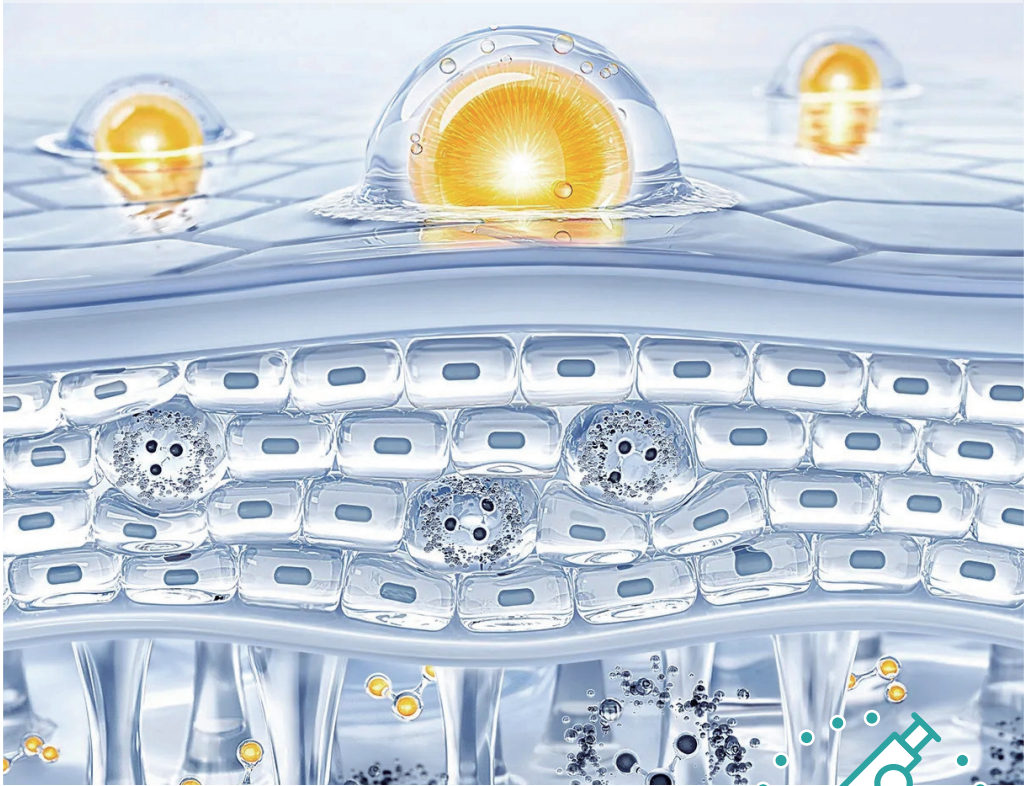
**One Swipe to Smooth — Targeting Hollow, Wrinkled, and Sagging Areas**

## **(Benefit Highlights):**

- ① Three-Phase Remodeling, Time-Reversing Effect – Reduces fine lines, plumps hollows, and lifts sagging skin.
- ② Direct Collagen Replenishment – 1000 ppm of recombinant humanized Type III collagen for immediate replenishment.
- ③ Triple Rare Orchid Cell Extracts – Selected from over 12,600 orchid species for unique anti-aging benefits.
- ④ Synergistic Advanced Plant Cell Technology – Two plant-derived progenitor cells that activate cellular regeneration.
- ⑤ Cutting-Edge Peptide Anti-Aging Complex – Five specialized peptides work together to smooth, firm, and stabilize skin.
- ⑥ Plant-Based Retinol + Ultra-Retinol – Softens fine lines and enhances facial contour firmness.



# CONTOUR-FIRMING COLLAGEN DEEP INFUSION SERUM



**Nano-Emulsion Technology — Penetrates 5  
Cell Layers to Reach Deep Skin**

## **(Benefit Highlights):**

- ①Sub-Micron Particles for Deep Absorption – Nano-emulsion system leverages the Tyndall effect to deliver actives deep into cells.
- ②Direct Collagen Replenishment – 1000 ppm recombinant humanized Type III collagen for immediate skin support.
- ③Proprietary “Thousand-Peptide” Anti-Aging – Over 2,000 small peptides, nearly 100 times more than conventional products, for advanced skin rejuvenation.
- ④High-Activity Nutrient Infusion – Bifida Ferment Lysate listed as the first ingredient for maximum efficacy.
- ⑤Cutting-Edge Peptide Anti-Aging Complex – Five specialized peptides work synergistically to smooth, firm, and stabilize skin.



**MOKSHA**



# RECOMBINANT HUMANIZED TYPE III COLLAGEN WRINKLE-REDUCING DUAL ESSENCE OIL



**Live Oil Layering for Freshness, Essence Infused  
in Oil, Oil Nourishment for Age-Defying Results**

## (Benefit Highlights):

### ① "7: 3 Water-to-Oil Golden Ratio"

This ratio mimics the skin's natural balance. The formula contains 70% essence to stabilize collagen and 30% live oil to nourish the skin's protective barrier.

### ② "Live Oil Layering & Freshness-Locking Technology"

Small-molecule live oils create a high-density, freshness-locking layer that seals out air and preserves the product's active ingredients.

### ③ "Shake to Activate Age-Defying Energy"

The layered formula stabilizes more slowly, providing a better user experience.

### ④ "90%+ Luxurious Active Ingredients"

With no added water, this silicone-free, pure formula is highly concentrated and active. It's designed to restart the skin's age-defying power.



**MOKSHA**





# AURORA BRIGHTENING SKINCARE ESSENCE OIL



## Cellular Autophagy-Level Revitalizing Energy to Reduce Skin Age

### (Benefit Highlights):

- ① "Oil Sac Carrier Technology, 10,000+ Small Molecule Oil Sacs"  
This technology stabilizes freshness and penetrates deep into the skin's layers.
- ② "Highly Active Yeast-Based Skincare System"  
Featuring a high concentration of Bifida Ferment Lysate as the primary ingredient, it repairs skin cells from the source.
- ③ "Natural Plant Oil Nourishing Energy"  
Combined with the oil sac technology, it provides deep moisturization and gentle, resilient nourishment.
- ④ "Dreamy Aurora Essence Oil Appearance"  
Every shake reveals a unique, arctic night sky.

MOKSHA



# HAITANIUM SEED ANTI-WRINKLE BODY MICRO-CRYSTAL OIL



**One Bottle Contains Over a Million  
Micro-Crystal Oil Beads**

## **(Benefit Highlights):**

**① "Precision Oil Suspension System"**

Each pump delivers millions of oil bead essences for intense skin moisturization.

**② "Facial-Grade Oil Nourishment"**

A "433" anti-aging system designed for deep moisturization, anti-oxidation, and reducing the appearance of fine lines.

**③ "95:5 Water-to-Oil Ratio"**

Melts into a watery texture upon contact, providing light, non-sticky hydration suitable for all seasons and skin types.

**④ "8 'Free-Froms'"**

Free from silicone oil, colorants, hormones, fluorescent agents, methyl and propyl parabens, and more.



**MOKSHA**



# PRO-XYLANE FIRMING & WRINKLE REDUCING BODY CREAM



**An Oil-Cream SPA-Level Anti-Aging  
Experience for Body Skin**

## **(Benefit Highlights):**

### ① "Visible Nourishment"

This product has a delicate, yellow pudding-like appearance, full of rich ingredients that distinguish it from the texture and feel of typical body lotions.

### ② "9% Luxurious Plant Oils, Infused into a Cream"

This formula moisturizes instantly and rebuilds the skin's protective lipid barrier.

### ③ "Supple and Non-Greasy"

It quickly relieves dry skin in autumn and winter, eliminating scaly, dry patches with a single application.

### ④ "High-Purity Pro-Xylane"

This ingredient promotes the production of collagen and glycosaminoglycans, leaving skin plump and supple.

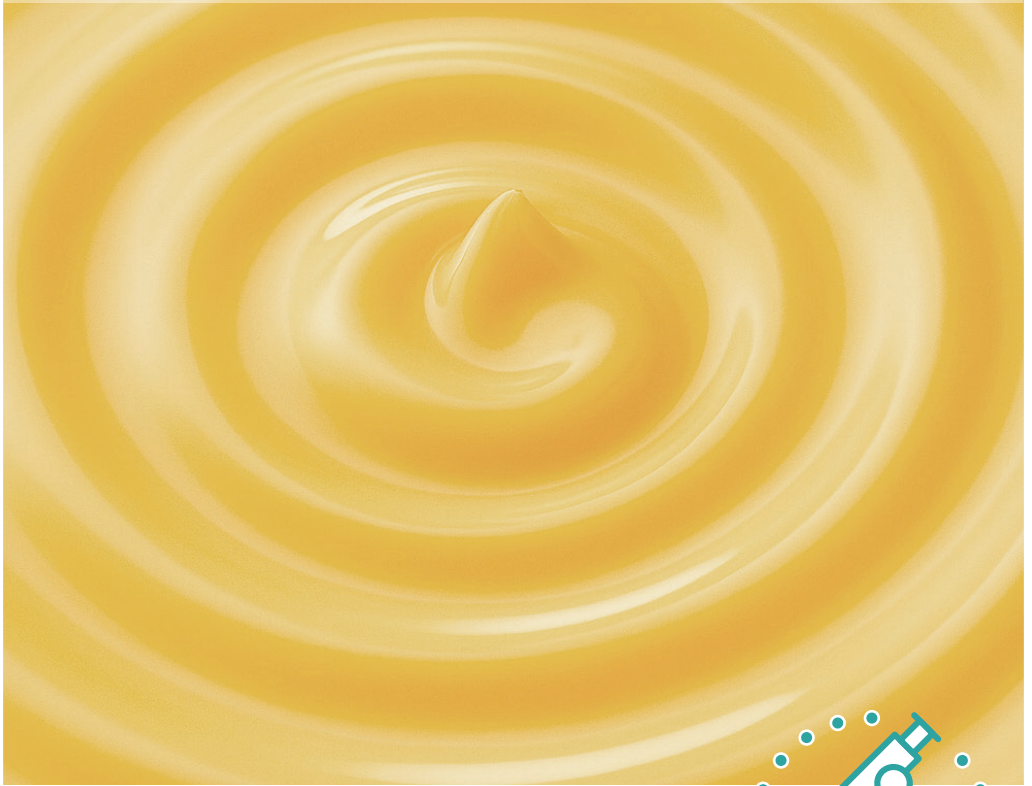


**MOKSHA**





# PRO-XYLANE FIRMING & WRINKLE REDUCING BODY CREAM



## Enzyme-Based Exfoliating Makeup Remover — Smooth, Bright, and Skin-Nourishing

### (Benefit Highlights):

- ① Water-Activated Emulsion, Zero Residue – Bi-phase oil & water formula, no second cleanse needed.
- ② Powerful Makeup Removal in 10 Seconds – Oil dissolves oil, effectively clearing pores for deeply clean skin.
- ③ Innovative Hard-Water Resistant Formula – Helps improve sensitive and acne-prone skin from the source.
- ④ Cleanse + Care + Nourish in One – Removes makeup while repairing and strengthening the skin barrier.



# MEDULLA PROTEIN PEPTIDE IONIC VOLUMIZING HAIR MASK



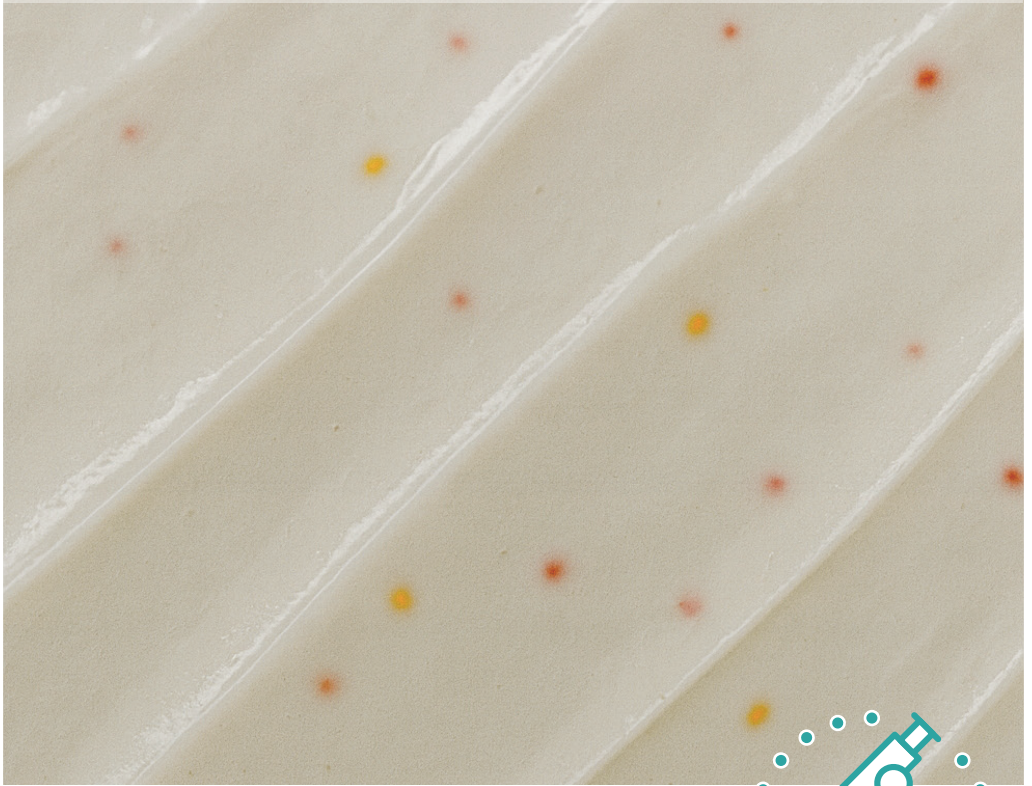
**30s from Frizz to Satin — Voluminous Lift,  
Heat-Damage Defense**

## **(Benefit Highlights):**

- ① Plant-Powered Care – 68% Ginseng Root Water + micro-polysaccharides to deeply nourish hair fibers.
- ② Steam-Free Protein + Hydro-Therapy – Triple-tech repair for damaged strands.
- ③ 30s Satin-Smooth Effect – Fills hair gaps, strengthens fibers, reduces breakage.
- ④ Cuticle Biomimetic Shield – Rebuilds & reinforces strands, forms breathable protective layer for glossy, silky finish.



# PROTEIN REPAIR STRENGTHENING HAIR MASK



Microcapsule Lock-In ·  
SPA Repair Mask

## (Benefit Highlights):

Tailored for severely damaged,  
color-treated hair.  
Fast fiber repair, stronger strands,  
less breakage.

One use = smoother hair & disulfide bond repair.



MOKSHA





# AMINO ACID COLOR LOCK & PROTECT SHAMPOO



**Cuticle-Sealing Color-Lock Technology —  
Non-Dye Fixation for Lasting Vibrance.**



## **(Benefit Highlights):**

- ① "3-in-1 Power" – One bottle = Color-Lock Shampoo + Protein Repair + Glossy Smooth Finish.
- ② "Pure Amino Surfactant System" – 0 harsh surfactants, gentle cleansing, ideal for frequently dyed & damaged scalp.
- ③ "Non-Dye Color Fixation" – Seals cuticles during washing for smoother, longer-lasting color; suitable for all hair shades.
- ⑤ "Acid-Balance + Heat Protection" – Reinforces defense against external damage, deeply improves texture, enhances shine.

**MOKSHA**



# SELENIUM DISULFIDE SERIES – 1%



**Powerful Anti-Dandruff · Scalp Purification ·  
Refreshing Hair**

## **(Benefit Highlights):**

- ① 1% Selenium Disulfide + Multi-Dimensional Oil-Control Actives – Intensive anti-dandruff & oil-purifying formula, deeply cleanses scalp.
- ② “Water-Free” Formula – Bifida Ferment Lysate as the first ingredient, delivering high-active nutrients.
- ③ Botanical Strengthening + Ionic Repulsion Tech – Boosts volume, hair looks fuller and stronger.
- ④ Plant-Based Soothing Care – Reinforces scalp barrier, leaving hair healthy and refreshed.

**MOKSHA**



# MULTI-PEPTIDE AGE-DEFYING EYE CREAM



## Eye Wrinkle Iron – Instantly Smooths Fine Lines Around Eyes

### (Benefit Highlights):

- ① "Primary Ingredient: Acetyl Hexapeptide-8" – High-concentration formulation exceeding 1000 PPM, purified to >99.55% (dry weight basis), rapidly diminishes fine lines.
- ② "All-in-One Solution for Eye Wrinkles, Dark Circles & Bags" – Expertly developed for comprehensive eye area concerns.
- ③ "Advanced Full-Face Wrinkle Reduction" – Suitable for treating wrinkles across all facial zones, delivering a luxurious skincare experience.
- ④ "Premium Skin-Feel Technology, Non-Comedogenic" – Silky high-couture texture provides deep hydration without greasiness. Won't clog pores or cause milia.



MOKSHA





# MULTI-PEPTIDE FIRMING & WRINKLE-REDUCING CREAM



## Precision Anti-Wrinkle Targeting – Sculpt Bone-Like Definition

### (Benefit Highlights):

- ① "High-Potency Acetyl Hexapeptide-8: Proven Wrinkle Fighter" – >1000 PPM concentration, 99.55% active purity (dry weight), disrupts wrinkle formation.
- ② "Pioneering Ginseng Root Water" – Featuring China's legendary "Nine Immortal Herbs", delivers antioxidant-rich nourishment for radiant skin renewal.
- ③ "Premium Bone-Contouring Anti-Aging Cream" – Visibly smoothes wrinkles within 15 minutes, lifts sagging contours.
- ④ "All-Day Hydration, Zero Greasiness" – Eliminates dryness-induced fine lines with weightless, non-comedogenic moisture.



# 5% HEXAPEPTIDE AGE-DEFYING WRINKLE SERUM



**Botox-Level Wrinkle Reduction – Youthful  
Skin, No Trace**

## **(Benefit Highlights):**

- ① "High-Potency Acetyl Hexapeptide-8: Clinical-Grade Efficacy" – 50,000 PPM concentrated formula, 99.55% active purity (dry weight).
- ② "Engineered Minimalist Formula: Hexapeptide as #2 Ingredient" – Prioritized potency with visible nutrient penetration.
- ③ "Breakthrough Bifida Ferment Lysate Base" – Proprietary fermentation technology replaces water, nourishes deep layers, erases dehydration lines.
- ④ "Time-Trace Erasure" – Instantly smoothes texture in 5 minutes, firms skin and reduces wrinkles in 7 days.



**MOKSHA**



# MULTI-PEPTIDE FIRMING EYE ESSENCE



**Eye Reset Serum – Reverse Time,  
Redefine Youth**

## **(Benefit Highlights):**

- ① "Primary Hexapeptide-8 Infusion" – High-dose 1,000+ PPM concentration, >99.55% active purity (dry weight), rapidly reduces fine lines.
- ② "Galactomyces Ferment Filtrate as Base" – Nutrient-rich formula penetrates skin matrix, hailed by ingredient connoisseurs.
- ③ "Multi-Zone Neuro-Peptide Targeting" – Achieves 30-minute flash wrinkle reduction, premium peri-ocular rejuvenation.
- ④ "Phase-Shift Absorption Technology" – Transforms cream-to-serum upon contact, penetrates in 5 seconds with weightless finish – essential for night owls.



**MOKSHA**





# ROSE CELL BLACK TEA LEAVE-ON MASK



Jelly-Texture Seru – Silky-Smooth Application  
Reinforces skin barrier

## (Benefit Highlights):

Soothing Effect

Hyaluronidase Inhibition Rate: 71.32% (avg.)

Firming & Anti-Wrinkle Effect

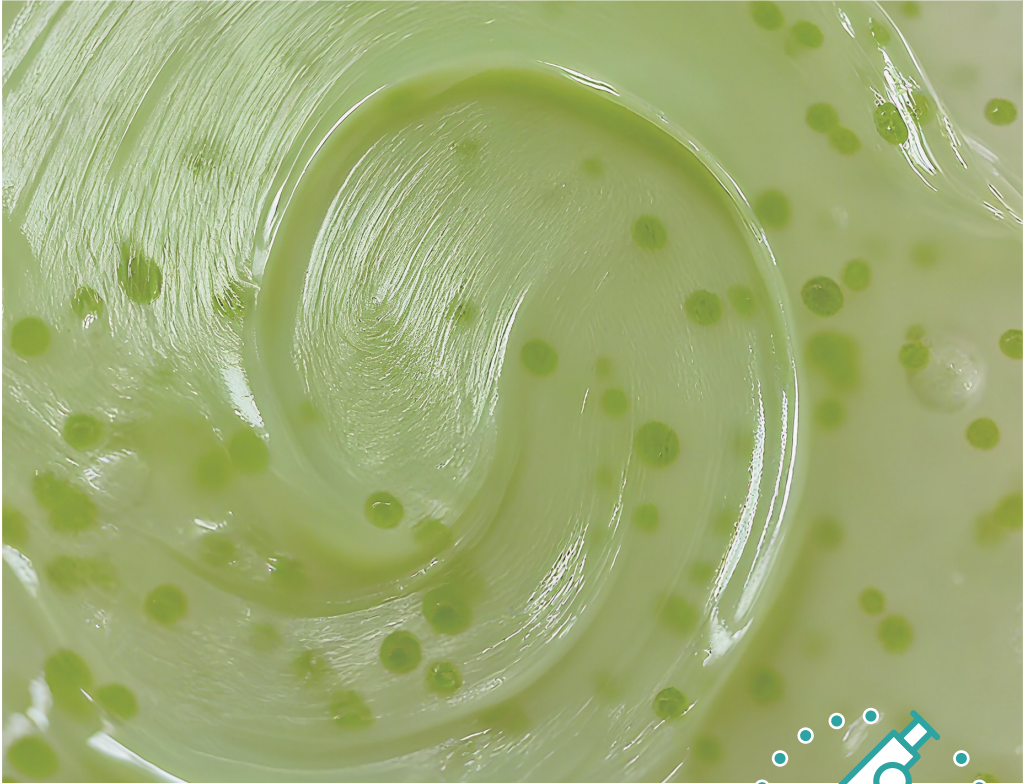
Elastase Inhibition Rate: 31.95%



**MOKSHA**



# MULTI-PEPTIDE FIRMING EYE ESSENCE



**“Biomimetic Sea Grape Fresh-Lock  
Technology with Organic ‘Longevity Algae’.”**

## **(Benefit Highlights):**

- ①Deep-Sea Anti-Aging Solution – Unlocks skin longevity secrets, deeply nourishes and revitalizes skin age.
- ②Ferment-Powered Youth Boost – Bifida Ferment Lysate (second key ingredient) delivers luxury-level skin care.
- ③Six-Dimensional Peptide Network – Cutting-edge anti-aging tech, synergistic action for rapid response.
- ④Biomimetic Fresh-Lock Microcapsules – Replicates sea grape structure, locks in freshness at cellular level; releases active essence upon application.



**MOKSHA**



# MICRO-ENCAPSULATED VOLUME-REPLENISHING CREAM -SERUM



**“One Bottle = ‘Instant De-Puffer’ + ‘Wrinkle Time Machine’ — Eyes with Built-In Youth Filter!”**

## **(Benefit Highlights):**

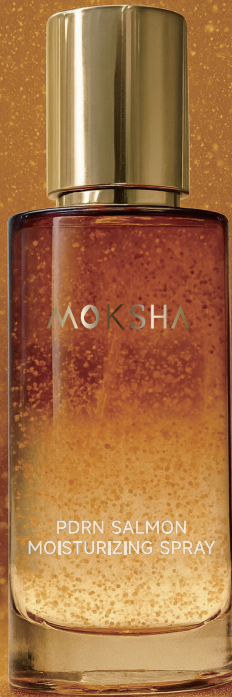
- ①Instant Brightening – Illuminates the eyes, instantly hiding signs of fatigue.
- ②Cooling Micro-Motor – Penetrates the eye area; reduces puffiness in 10 minutes, lifts and tightens contours.
- ③Dual-Peptide Action – Blocks expression line signals, stimulates collagen regeneration, forming an anti-wrinkle support network from within.
- ④Dark Circle Eraser – Diminishes tiredness, leaving eyes clear, bright, and refreshed.

**MOKSHA**





# PDRN SALMON MOISTURIZING SPRAY



## Sodium-Grade Repair, Instantly Kickstarting a New Chapter of Skin Transformation

### (Benefit Highlights):

- ① "Spray & Melt into Water": Features a unique condensed mist texture. A gentle press on the nozzle releases a fine mist that melts into a refreshing, watery feel the moment it touches the skin—no sticky residue, quickly penetrating the skin's base for layered nourishment.
- ② "High-Energy Sodium DNA": Acts as a "fast-charging agent" for cellular energy. Deeply participates in metabolism, significantly enhancing the skin's self-repair ability to address various signs of aging and damage.
- ③ "Enhanced with Rare PDRN": Precisely activates skin regeneration, promotes cell proliferation and differentiation, strengthens the skin's base, and restores firmness and elasticity.
- ④ "All-Scenario Adaptable Usage": Excels at hydrating during commutes, setting makeup pre-cosmetics, and priming for nighttime intensive repair—providing skin protection anytime, anywhere.

MOKSHA



# MICROCAPSULE FRESH-INFUSED BODY WASH



“DIY Shake-to-Mix Body Wash — Fresh  
Essence Activation, Skincare-Level Bathing.”

## (Benefit Highlights):

- ①Cell-Level Youth Extension – DNA-Na accelerates cell regeneration, protects telomeres, repairs UVB damage, and supports renewal for longer skin vitality.
- ②Amino Acid Surfactants – Extra-gentle cleansing, purifies without irritation.
- ③Microcapsule Fresh-Infusion System – Dual-phase 1+1 mix; shake to activate, essence freshly released into each bath.
- ④Facial-Grade Skincare Actives – Leaves skin smoother, refined, and more delicate.



MOKSHA



# IMMORTELLE RESET CHRONO-RECOVERY ELIXIR



**“DIY Shake-to-Mix Body Wash — Fresh  
Essence Activation, Skincare-Level Bathing.”**

## **(Benefit Highlights):**

- ①Cell-Level Youth Extension – DNA-Na accelerates cell regeneration, protects telomeres, repairs UVB damage, and supports renewal for longer skin vitality.
- ②Amino Acid Surfactants – Extra-gentle cleansing, purifies without irritation.
- ③Microcapsule Fresh-Infusion System – Dual-phase 1+1 mix; shake to activate, essence freshly released into each bath.
- ④Facial-Grade Skincare Actives – Leaves skin smoother, refined, and more delicate.

**MOKSHA**





# RINSE-FREE REFRESHING SHAMPOO GEL



**Waterless Application | Revives Hair's  
Lightweight Breathability**

## **(Benefit Highlights):**

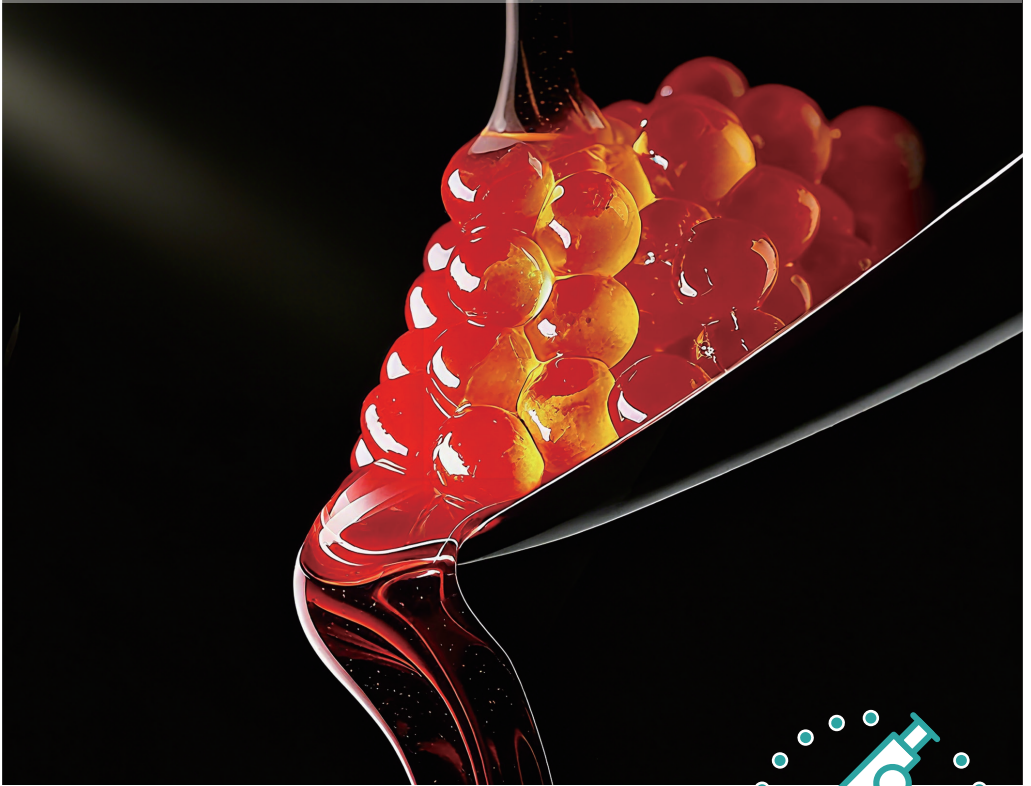
- ① Targeted Sebum/Sweat Absorption | Refreshing Clean Revolution
- ② Microbiome Balancing | Sustains Scalp Ecosystem Stability
- ③ Prime For: Frequent Travelers / Greasy Flat Roots / Emergency Oil Control



**MOKSHA**



# MICRO-ENCAPSULATED CAVIER CONCENTRATED SERUM



**“Plump from Within · Collagen-Rich ·  
Microcapsules Lock Freshness, Every Pearl  
Sealed.”**

## **(Benefit Highlights):**

- ①Microcapsule Fresh-Delivery System – Lipid-based microcapsules release active ingredients instantly upon fingertip massage.
- ②Triple-Pathway Collagen Regeneration – Stimulates collagen progenitor cells, activates fibroblasts, and inhibits Type I collagen degradation.
- ③Barrier Repair & Hydration Network – Forms an internal water reservoir to deeply hydrate and restore skin barrier.



# GENTIAN TRUFFLE ESSENCE



**Biomimetic caviar microcapsules encapsulate ingredients to lock in freshness for lasting vitality.**

## **(Benefit Highlights):**

- ①Microcapsule Encapsulation Technology: A visually innovative design where you can see the active ingredients.
- ②Real-time Wall-breaking Technology: A smart pump core that unlocks fresh, active ingredients with every use.
- ③Key Ingredient: Caviar Extract.  
Plumping and Firming: Cone Snail Peptide.  
Dual Anti-Glycation & Anti-Oxidation: Carnosine.



# MOKSHA





# RETINOL COLLAGEN SERUM



**Dual-core, dual-effect comprehensive refinement with intensive nourishment from rare caviar.**

## (Benefit Highlights):

- ①Layered skincare: One tube reverses skin age, the other provides fresh, anti-aging benefits, making  $1+1 > 2$ .
- ②Microcapsule Essence + Concentrated Lotion: Dual-effect in one to intensely nourish skin.
- ③Concentrated Lotion: A three-stage anti-aging solution to reverse skin age.
- ④Ergothioneine + Sodium DNA + Fibronectin. Ergothioneine provides active anti-oxidation for anti-aging at the source. Sodium DNA repairs damage. Fibronectin penetrates



**MOKSHA**



# ROSE COLLAGEN ESSENCE



Golden Caviar Microcapsule Fresh-Lock System

## (Benefit Highlights):

Imported Sturgeon Caviar Extract

Patented Carboxymethyl  $\beta$ -Glucan Sodium"

Rose Collagen



MOKSHA





# RECOMBINANT COLLAGEN ANTI-WRINKLE CREAM EYE MASK



**Efficacy: Firming, Anti-Wrinkle, Plumping**

## **(Benefit Highlights):**

- ① Texture/System: White cream with a luxurious, whipped texture reminiscent of high-end sensory creams.
- ② Key Ingredient: Recombinant humanized collagen (in significant concentration).



**MOKSHA**





# SEAWEED & GLACIER ESSENCE



**Glacial Microalgae –  
Ancient Microorganism Sourced from Tibet**

## **(Benefit Highlights):**

- ① Instant Cooling Relief | Soothes Sun-Induced Heat & Discomfort
- ② Frosted Sorbet Texture with Refreshing Blue Hue
- ③ Skin-Chilling Aqua Transformation | Featherlight Absorption



**MOKSHA**



# RECOMBINANT HUMANIZED TYPE III COLLAGEN LIFT ACTIVATING ESSENCE



**"Advanced complex blends renew firm, lifted, and resilient skin."**



## **(Benefit Highlights):**

- ① "Dual-action enhancement from within and without" – Not merely a unilateral effect, but an internal-external synergistic improvement.
- ② "Non-trace direct supplementation of homologous collagen" – Directly delivers 1000ppm Type A recombinant humanized Type III collagen.
- ③ "Dermal corset technology" – Spanish lifting tech constructs a 3D contouring network on skin surface to tighten sagging tissue.
- ④ "Triple collagen boosters" – Work synergistically to accelerate neo-collagenesis.

**MOKSHA**



# EUROPEAN BILBERRY LUMINOUS BODY MIST



Rescues dry, "air-conditioned skin" by quickly hydrating it and slowing down dehydration-related aging.

## (Benefit Highlights):

- ①Rescues "Air-Conditioned Skin" in Summer, Soothes "Dryness, Sensitivity, and Aging"
- ②Lightweight Oil Mist Texture, Simultaneous Water and Lotion Replenishment
- ③Three Imported Plant Oils Nourish the Skin Barrier; Full-Spectrum Hyaluronic Acid Locks in Water in 3D
- ④Boosts Skin Elasticity and Delays Skin Aging  
Ergothioneine and Soluble Collagen deeply promote elasticity, intelligently scavenge free radicals, and resist oxidative damage.





# GOLDEN NOURISHING & RADIANCE-BOOSTING MASK



## Glowing Gold Renewal Mask: Premium SPA Luminescence Treatment



### (Benefit Highlights):

#### ① Deep Hydration & Nourishment

Intensive care for skin glycans (Isomers, Sodium Hyaluronate,  $\beta$ -Glucan)

#### ② Antioxidant Revitalization

Reveal dewy, luminous smoothness (Saffron Flower Extract, Tocopherol/Vitamin E)

#### ③ Luxuriously Gilded Texture

Silky molten gold envelops skin in deluxe care

**MOKSHA**

